

PRSRT: STD
U.S. POSTAGE
PAID
DOTHAN, AL
PERMIT NO. 623



6600 Old Webb Rd • Webb, AL 36376

Return Service Requested



www.bobbylewisauktion.com
Cell: 334-726-1700

PAXTON PUBLIC AUCTION

SATURDAY, FEBRUARY 27 8:00 AM

Auction Site:

Intersection of Walton County Hwy. 147
and US HWY 331 in Paxton, Florida
(147 County Road 147 Laurel Hill 32527)

Directions from Montgomery, AL:

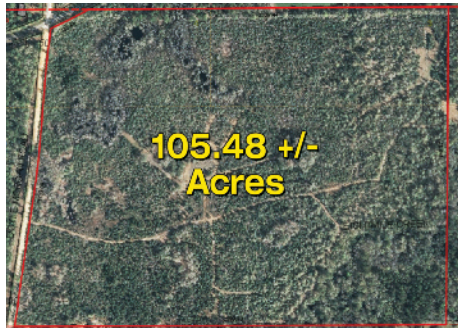
Travel Highway 331 S. to Paxton, FL,
turn right on County Highway 147
and watch for signs.

Multiple properties located in
Covington, Geneva, and Houston County, Alabama,
Walton County, FL and
Avalon Beach - Santa Rosa County, FL



proxibid.

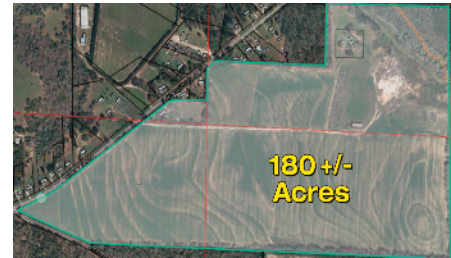
Geneva County
105.48+/- Acres located
on Finks Mill Road



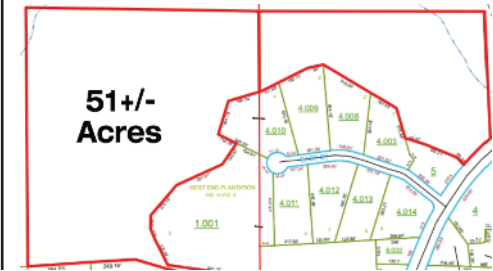
Covington County
5+/- Acres located
on Hwy 55 & County Road 4



180+/- Acres located on
Kinsey Rd. in Dothan, AL



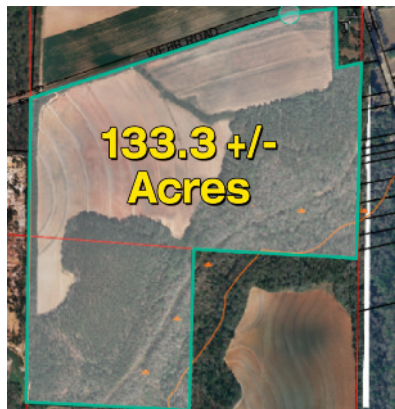
51+/- Acres located off
Gilmore Road and behind
West End Plantation Subdivision



Corner of Hwy 331 & Walton County 147
16+/- Acres located in Paxton, FL

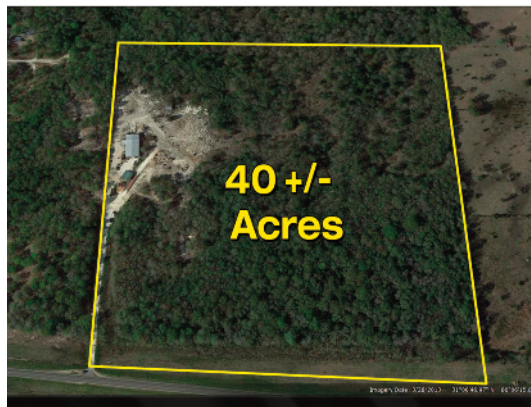


133.3+/- Acres located
on Webb Road in Dothan, AL



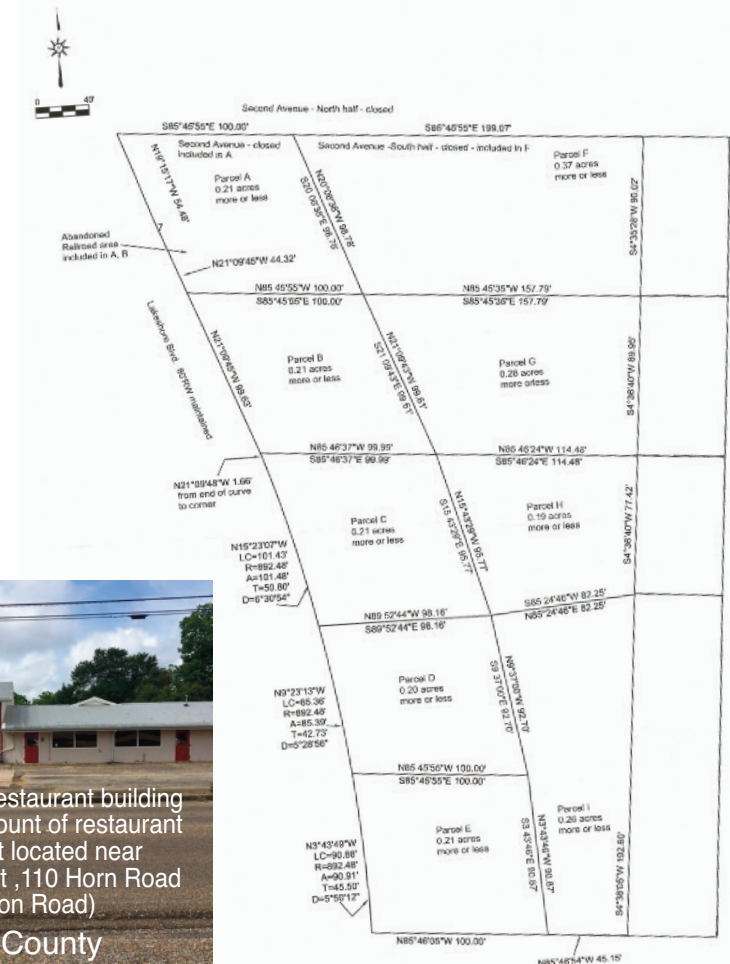
Offered In Parcels
& or Whole

40+/- Acres
located in
Samson, AL off
AL-52



Covington County - Block 31
located on Lakeshore Blvd

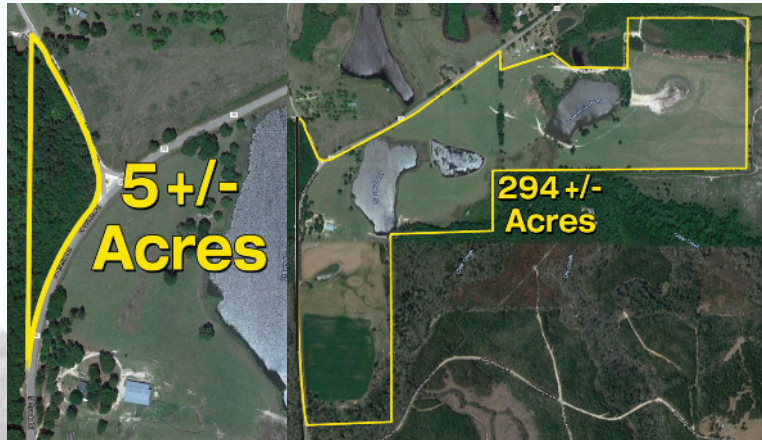
CDC
Covid
Guidelines:
Mask
&
Social
Distancing
Requested



Commercial restaurant building
with large amount of restaurant
equipment located near
Dothan Airport, 110 Horn Road
(Denton Road)

Dale County

County Road 20 North Creek Road 294+/- Acres Offered In Parcels & Combinations



**House situated on 10 +/- acres,
barn & shed, 8 miles below Paxton Florida**



Gary's Saw & Small Engine Shop
2 +/- Acres, Large Inventory of New & Used Parts.
Retiring due to health. Located in Paxton, FL



**Lake Jackson Lake View
3 Bedroom 2 Bath Home - Florala**



**Lake Jackson Lake View Lot
w/ Mini Home**



Lake Jackson Lake View Lots for Mini Homes

Partial Equipment list 2-27-2021 Auction

Tractors

Farmall super C
Farmall C
Farmall Cub (wide front)
Ford 8000 canopy

John Deere 7520 MFWD w/JD 740 loader.
(grapple, bucket & hay spear sold separately or as package)

John Deere 6430 MFWD w/JD 663 loader.
(grapple, bucket & hay spear sold separate or as package)

John Deere 6330 MFWD with JD 663 loader.
(grapple, bucket 7 hay spear sold separate or as a package)

John Deere 6000 Hi-Cycle Sprayer
John Deere 6420 MFWD with JD 640 loader.
John Deere 4430 Canopy
John Deere 4520
John Deere model A
John Deere model B
John Deere model H
John Deere model M
International Cub Cadet with belly mower
Kubota L 2500 with LB400 loader (4 WD, roll bar)
Massey Ferguson 165
Massey Ferguson 1085
New Holland TC 30, 4WD compact tractor

Farm Equipment

Kuhn SR112 hay rake
GS 2002 Disc mower
Fella Disc Mower
John Deere 468 round baler with monitor
Vemeer 605 L series round baler with monitor
Vemeer 605 M round baler with monitor
6:X42 PTO drive grain auger
8X60 PTO drive grain auger
250 ton grain bin to be moved
4 Dryer wagons
4 Gravity flow side dump wagons
Large shop made hay hauler
16' Utility trailer
Gooseneck car hauler
5th Wheel 30' equipment trailer
Brown Haul easy 20' tilt trailer
(2) Utility trailers 16'
(3) 2 Row cultivators
Cole Planters 2 row almost new
1 Yard dirt scoop

(2) V Tine cultivators
1 Bottom plow
5' Box blade
7' Box blade
5 Tine King Chisel plow
(3) Mobile home axles
(2) Mobile home hitch frames
John Deere 210 disk 16'
John Deere 8' seeder
IH 5100 Grain drill
Howse post hole digger (like new)
1,000 gallon nurse tank with motor/pump
AgSpray sprayer on cart
Johnson 3pth 200 gallon sprayer
Fuel tank with pump on tandem axle trailer
BushHog BH26, 6' heavy duty rotary mower
Lawson Pasture Aerator
New Holland 358 porta mill
GrainOvator grain wagon with unload auger
MF side delivery rake

MF 21' disk
3 PTH Middle buster
(5) John Deere rear wheel weights
John Deere front weight rack
(8) John Deere front weights
Ford front weights and rear wheel weight
LS 7 ft. offset disk (Like New)
John Deere 7300 vacuum planters with monitor
Monesium 8 row stack fold vacuum planters with monitor
(2) Spreader buggies
Bell 8 row lay by sprayer
KBH Module builder
(50) Metal T post
Hay Ring
(20) Fence panels
(9) Cow panels
30' Cotton Trailer (no sides)
JD BW 14' Disk
(2) Cow Feeders

Construction

Caterpillar 311 Excavator
JCB Loadall 5048 telescoping forklift
Viking Rough Terrain fork lift
John Deere 310D 4 WD loader
backhoe (clean machine)
John Deere 310D 4WD loader-backhoe
(extend hoe, good machine)
12' Dump Truck Bed & Carriage
Kobalt portable welder,
Air compressor and tool box mounted
on HD Utility trailer

Autos

1958 Edsel sedan (barn find)
1959 Edsel sedan (barn find)
1964 Jeep J2000 Pickup
(31K miles, mint condition)
1984 International School Bus
1992 Dodge Van

Miscellaneous

(3) Recycler Balers
(2) Digital 4x4 pallet scales w/readout
(2) 5th Wheel Hitches
Electrical Wire Stripper

Aluminum Can Conveyor

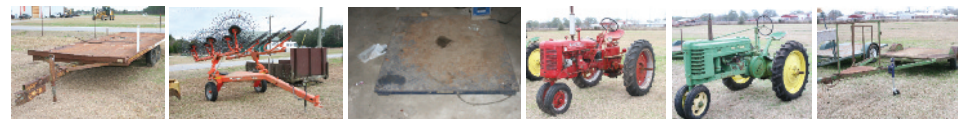
Columbus 200 Antique cane mill

Cattle Head Catch

Large amount of Cattle equipment
sold offsite, head catches, round-
about, 6' catch pen panels, gates and
more. Located on farm along North
Creek Road

500 Plus round bales of
good quality grass hay (8 onsite)
Large quantity of wall patrician panels
(2, 3, 4 & 5 foot)

Pallets of assorted tools and
other items



DISCLAIMER: All information contained in this brochure was derived from sources believed to be correct but is not guaranteed. This brochure may not be reproduced in whole or any part without the written consent of Bobby Lewis Auction & Real Estate, Inc. Announcements made at the auction supercede all printed material. Square footage, dimensions and acreage are based upon information provided by others and are believed to be correct; however, purchaser or purchaser's agent/broker shall bear the responsibility to confirm all calculations prior to the beginning of the auction. Not available to residents of any state in which this real estate is not in compliance with real estate laws or other laws of that state. Payment will be 25% down in cash or certified US funds, balance at closing before March 29, 2021. A 10% Buyers Premium will be added to **only real estate purchases!** Sold "AS IS WHERE IS", NO WARRANTY EXPRESS OR IMPLIED. Agency disclosure: Bobby Lewis Auction & Real Estate, Inc. is a Sellers Agent only. Alabama License #1675, 67439-0, FL AU 2303, AU 2732, CQ 1039403, BK 3060320, Broker #000067439-0

Call Bobby Lewis 334-726-1700 for details and a free color brochure or log onto our web-site at <http://www.bobbylewisauktion.com> to join our mail list or for more info.

Bobby Lewis: 334-726-1700



AUCTION INFORMATION

Sale Information: Call Bobby Lewis, Cell: 334-726-1700

Hotel: Holiday Inn South, 2195 Ross Clark Circle Dothan, Alabama 36301, 334-794-8711

Airports: Dothan Alabama, Delta/ASA

Auctioneer: Bobby Lewis Al. Lic # 1675, 67439-0, FL AU 2303, AU 2732, CQ 1039403, BK 3060320

Terms: All purchases are to be paid for in American funds on sale day by cash, wire transfer or check. A bank letter of guarantee must accompany all personal or company checks made out to Bobby Lewis Auction & Real Estate, Inc. guaranteeing payment to Bobby Lewis Auction & Real Estate, Inc. **All items must be removed by March 6th, 2021 and any lot left past this date will have a \$25.00 per lot per day storage charge unless prior arrangements have been made.**

Buyer's Premium: A 10% buyer's premium will be added to **only real estate purchases!**

Licensed Buyer Broker Participation: The Broker must have performed all requirements of the Buyer Broker Guidelines and executed a Buyer Broker Registration Form, provided by the Auction Company, by the specified registration deadline. Failure to properly register or comply with the provisions of the Guidelines will disqualify the Broker from receiving any commissions.

Registration Notice: Registration begins one hour prior to auction. Anyone wishing to bid on items must register and obtain a bidder card. Anyone bidding for an account other than his or her own must register as such. We reserve the right to expel or exclude anyone.

Warranty: All items sell "AS IS WHERE IS" without warranty or guarantee of any sort, whether expressed or implied. **DO NOT BID** unless you have determined the condition of the lot by your own examination. All information was obtained from sources assumed to be correct but is not guaranteed by Bobby Lewis Auction & Real Estate, Inc.

Catalog: Brochure and/or any other auction day handouts are furnished as a guide only, no guarantee as to the accuracy of description is made.

Sales Tax: All sales are subject to Alabama Sales Tax laws unless you have proper resale exemption. Any dealer purchasing for resale must execute a Certificate of Resale and present your Sales Tax Permit. Failure to furnish this information will result in payment of sales tax without any adjustments being made by company at a later date.

Absentee Bids: Absentee bids mailed and received no later than February 25, 2021 will be accepted. The bid must be accompanied with a certified check or personal/company check with bank letter of guarantee made payable to Bobby Lewis Auction & Real Estate, Inc. guaranteeing payment to Bobby Lewis Auction & Real Estate, Inc. in the amount of the bid plus any applicable sales tax or fees. Failure to follow this procedure will nullify the bid.

**Plus many more items by auction time, call to consign or more info:
Bobby Lewis 334-726-1700**